



Proven, Cost-Effective Technology to Maximize Production

Producers globally rely on Fisher Energy's FisherPump™ products to meet their challenging production needs; exacting pump specifications along with thorough documentation requirements.

FisherPump products have led the industry since 1979 in design, manufacturing, testing, and servicing engineered heavy-duty pumps and pump packages to meet the most rigorous requirements for offshore and onshore production sites around the globe. Our Fisher Energy team specializes in vertical multi-stage process pumps, vertical multi-stage barrel pumps, submersible turbine pumps, and skid packaging solutions including seawater lift and firewater pumps.

Our FisherPump products have earned a reputation for unsurpassed quality and details that matter for your project. The pumps are designed for flow-rates up to 12,000 GPM and pressure up to 2160 PSIG. Every product the Fisher Energy team designs is custom, so we have the ability to manufacture a wide array of engineered product solutions.

Fisher Energy adheres to the most advanced manufacturing techniques available. By utilizing CAD design, and precision manufacturing and testing, we have total control over every aspect of our products. Our dedicated Quality Control team ensures that our broad product line adheres to the most demanding quality standards and international industry specifications.

FisherPump VS-1 Vertical Multi-Stage Process Pump

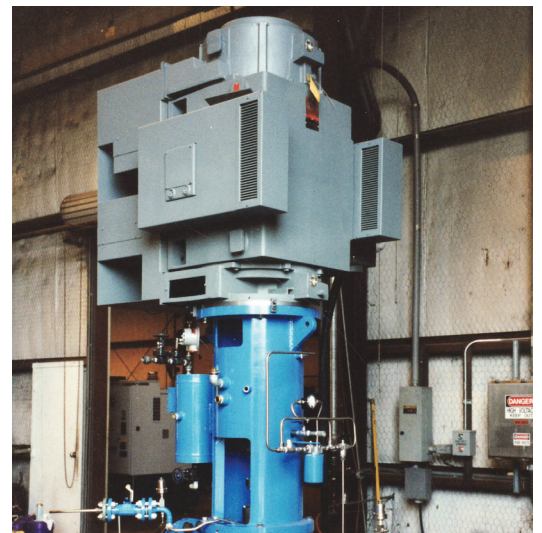
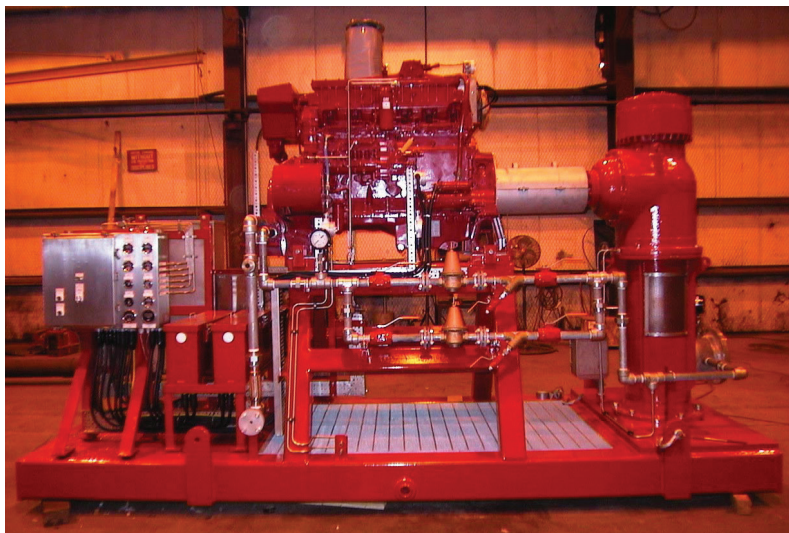
FisherPump VS-1 pumps are heavy duty single casing pumps designed to meet or exceed international standards developed by API-610, ANSI, Hydraulic Institute, and NFPA No. 20. They are also available UL & FM approved for fire protection.



Fisher Energy's products are tailored for the most challenging fluid applications, from deepwater offshore production platforms to remote pipelines, handling a range of hydrocarbons and other fluids.

FISHERPUMP™ Multi-Stage Centrifugal Pumps
Firewater Pump Systems | Fluid Pump Systems | Fluid Process Systems

FisherPump is a trademark of Fisher Energy Partners, LLC



We design and deliver unitized systems that include the pump, driver, controls, piping and instrumentation. We design and develop our pumps with your needs in mind including local site environment, maintenance and quality. For example, FisherPump's Single Stuffing box allows for quick seal replacement. Our pump columns are flanged and O-ringed for precision alignment and positive sealing while all machining is performed after welding for guaranteed alignment. Our shaft couplings are available in various threaded or keyed designs. The FisherPump team is experienced and knowledgeable regarding a wide range of materials and can work with any specified alloy or coating system.

FisherPump Submersible Turbine Pump

FisherPump submersible turbine pumps are custom built to our client's specifications. They are designed with the electric motor directly coupled below the turbine pump assembly for simplified assembly. A waterproof electric cable supplies power to the motor from the topside power source. FisherPump submersible turbine pumps are often used offshore in seawater lift, firewater jockey and utility water supply applications. These pumps offer economic solutions for extremely long setting pumps where lineshaft length may become an issue.

FisherPump VS-6 Vertical Multi-Stage Barrel Pump

Similar to the VS-1, the FisherPump VS-6 Vertical Turbine Multi Stage Barrel Pump is a heavy duty double casing pump enclosed in a suction barrel. They are engineered to meet or exceed international standards developed by API-610, ANSI, ASME, Hydraulic Institute, and others.

Fisher Energy can deliver unitized systems that include the pump, driver, controls, piping and instrumentation. These pumps are highly effective where there is inadequate system net positive suction head (NPSH) available or there are space constraints which preclude the use of horizontal multi-stage pumps. They are quite often required for high pressure applications in difficult to handle fluids with applications such as hydrocarbon booster and transfer, liquid propane LNG, chemical transfer, crude oil loading, condensate processing, brine injection and cryogenic service.

FisherPump BB-4 Horizontal Multi-Stage Process Pump

The FisherPump BB-4 horizontal multi-stage process pumps are designed to meet or exceed API-610 standards. Type BB-4 are horizontal, centerline mounted, multistage, diffuser volute, single casing, centrifugal pump sets supplied as unitized skid packages. Applications include injection service, fuel oil transfer, petroleum refineries and many other high pressure services. Engineered and constructed in a wide variety of materials to ensure compatibility with pumped fluids and local environments.

Key Advantages

- We manufacture a broad range of products to offer what you need.
- We have decades of experience in the offshore and onshore markets to give you peace of mind.
- We have complete manufacturing control to deliver the precision you require.
- We have a dedicated documentation department to ensure pump compliance.
- We offer service and original spare parts globally to keep your production up and running.

FISHERPUMP™ Multi-Stage Centrifugal Pumps
Firewater Pump Systems | Fluid Pump Systems | Fluid Process Systems

FisherPump is a trademark of Fisher Energy Partners, LLC